



RIM Spatial Data

1. GIS Data & Map Products
2. Spatial Data Accuracy Limitations
3. Application Phase: Map and Shapefile
4. More on Boundary Creation Considerations

GIS Data & Map Products

Master Layer

Shapefile / ArcMap

Web Map

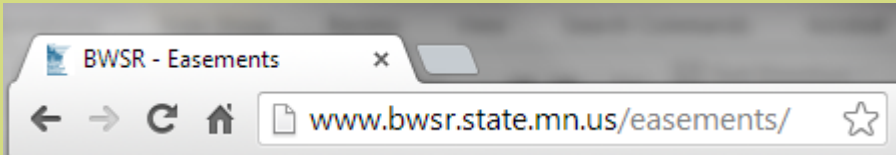
Use in Web Browser

PDF Map

For Printing

NOTE: There are limitations to the data. Usage guidelines later...





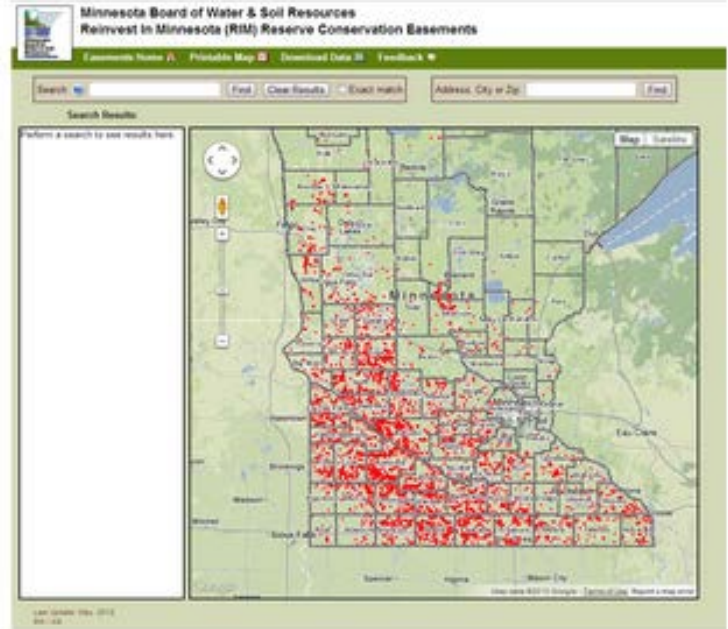
Web Address:

<http://bwsr.state.mn.us/easements>

Scroll down if needed and look along the right-hand column of the page.

You'll see this box →

Maps & GIS Data



- **Launch Web Map** 
- **Download Shapefile** 
- **View PDF Map** 



Minnesota Board of Water & Soil Resources Reinvest In Minnesota (RIM) Reserve Conservation Easements

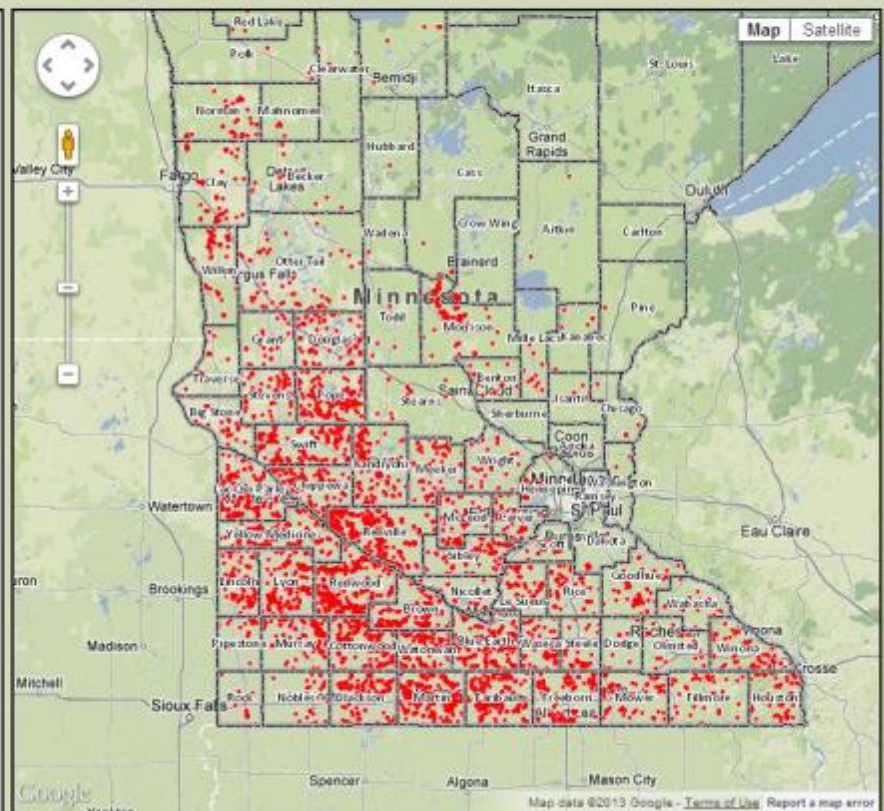
[Easements Home](#) [Printable Map](#) [Download Data](#) [Feedback](#)

Search: Exact match

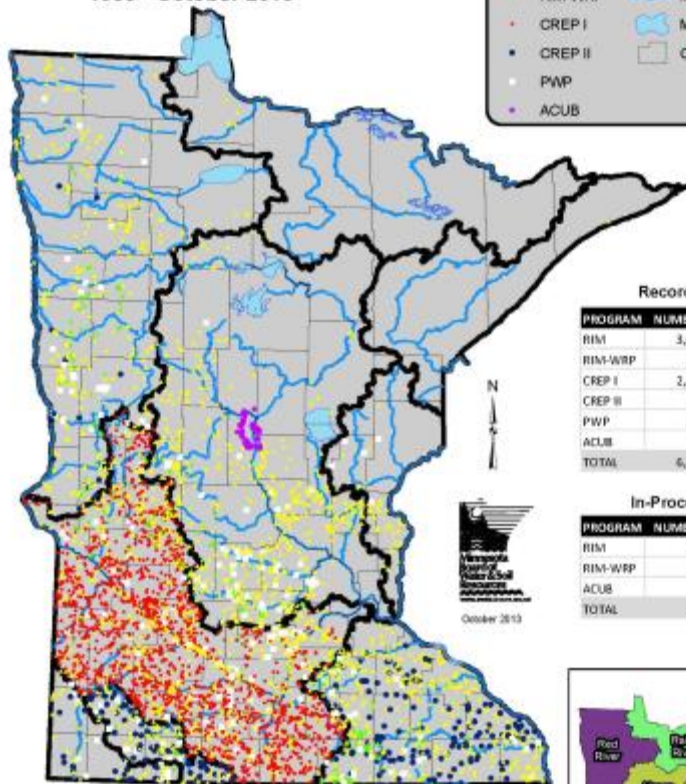
Address, City or Zip:

Search Results:

Perform a search to see results here.



Minnesota's State-Funded Conservation Easements 1986 - October 2013



State Easement Programs

- RIM Reserve River Basins
- RIM-WRP Major Rivers
- CREP I Major Lakes
- CREP II Counties
- PWP
- ACUB

Recorded:

PROGRAM	NUMBER	ACRES
RIM	3,098	84,359
RIM-WRP	393	35,632
CREP I	2,492	99,999
CREP II	283	7,160
PWP	301	11,507
ACUB	86	11,887
TOTAL	6,653	250,542

In-Process:

PROGRAM	NUMBER	ACRES
RIM	359	11,586
RIM-WRP	159	10,592
ACUB	3	396
TOTAL	521	22,574

Minnesota
Department of
Natural Resources
www.dnr.state.mn.us
October 2013



RIM Reserve: Minnesota's RIM assessment program removes lands from agricultural production to benefit water quality and fish and wildlife habitat.

RIM-WRP: Minnesota's Reinstated in Minnesota (RIM) Reserve Program combined with federal Wetland Reserve Program (WRP).

CREP I: Conservation Reserve Enhancement Program (CREP), combines RIM Reserve with the federal Conservation Reserve Program (CRP). Easements must be in the Minnesota River basin.

CREP II: Conservation Reserve Enhancement Program (CREP), combines RIM Reserve with the federal Conservation Reserve Program (CRP). Easements must be in the Red, Missouri, or Lower Mississippi River basins.

PWP: RIM Reserve Permanent Wetland Preserves (PWP) for existing wetlands at high risk of being drained or filled.

ACUB: Army Compatible Use Buffers is a partnership with the US Army to acquire easements that provide for land conservation and prohibit development of critical open areas near Camp Ripley.

Spatial Data Limitations

Boundaries are NOT survey-grade

Disclaimer: The maps and data available for access at this website are provided as is without warranty or any representation of accuracy, timeliness, or completeness. There are no warranties, expressed or implied, as to the appropriate use of the maps and data or the fitness for a particular purpose. The maps and associated data at this website do not represent a survey. No liability is assumed for the accuracy of the data delineated on any map, either expressed or implied.



Spatial Data Limitations

“Garbage In, Garbage Out”

- Just because it is digital, the source data remains the same.
- Boundaries of early easements (in the mid-to-late 1980s) were not created with the same level of accuracy as ones created today or will be created in the future.
- As GIS technology and aerial imagery has improved, so have boundaries.
- Easement boundaries are NOT surveyed (except for RIM-WRP).
- Digital Public Land Survey (PLS) data availability and accuracy varies widely across the state.



Spatial Data Limitations

Main Points:

- The GIS Shapefile is for LARGE SCALE **planning purposes** and for reporting LARGE SCALE **environmental outcomes** of the RIM program.
- The GIS data is **not** meant to be used to determine site-specific, SMALL SCALE issues such as crop encroachment
- You **MUST** use the recorded Exhibit 'A' Map & Legal Description found in the easement file to determine site-specific boundaries.
- **Do NOT make assumptions** about the data. When in doubt, check the recorded documents in the easement file and contact our staff for guidance.



Application Phase: Map & Shapefile

Printed Map
of Site

Shapefile
Boundary of
Easement Area



Printed Map of Easement Area

- **Used to help determine eligibility.**
- Mail to us with the rest of the application package.
- Include: proposed easement boundary, section lines, ¼ section lines, aerial photo, other nearby RIM easements, utility easements, etc.
- All features **NEED** to be clearly labeled. If they are not, there will be a delay in processing your application.



Need Help?

If you need advice on what to include (and what NOT to include) on your map, I can send you examples and provide pointers.

Just get in touch:

seth.weeks@state.mn.us



Shapefile of Easement Boundary

- Used after the easement has been approved for funding.
- Used as a starting point to create the official Exhibit 'A' map and legal description which is what gets recorded.
- E-mail to me: seth.weeks@state.mn.us
- We **WILL** be modifying this shapefile. Do not use your version, as it WILL change. When the easement is recorded, the new boundary will be added to our master layer.



Changes to the Proposed Boundary

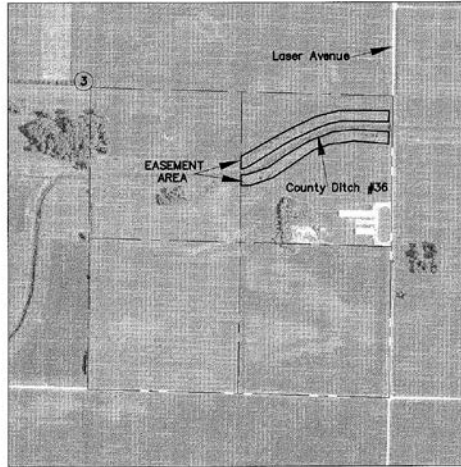
- *We WILL change the boundary after you send it to us. Why?*
 - “Cleaning-up” of your line work.
 - Deed (ownership).
 - Road right-of-way offsets (vary depending on type of road).
 - Utilities, railroad right-of-ways and other easements.
 - Existing adjacent RIM easements.
 - Paid acres vs. actual acres.



Easement I.D. No: 64-01-10-09
Map 1 of 1
STATE OF MINNESOTA
BOARD OF WATER AND SOIL RESOURCES
CONSERVATION EASEMENT
EXHIBIT 'A'

This map delineates the easement area(s) referred to in the attached easement conveyance. *This is not a legal survey, and not intended for use as a survey plat.*

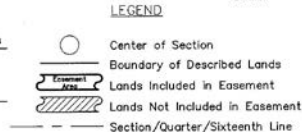
Section 3 T. 110 N. R. 36 W., Redwood County



Prepared By:

Board of Water and Soil Resources
Dated:

April 12th, 2010



← Exhibit 'A' Map Legal Description ↓

Easement Number 64-01-10-09

STATE OF MINNESOTA
BOARD OF WATER AND SOIL RESOURCES
CONSERVATION EASEMENT
LEGAL DESCRIPTION

This is not a legal survey and not intended for use as a survey plat.

That part of the NE1/4 of the SE1/4 of Section 3, T. 110 N., R. 36 W., lying Westerly of the Laser Avenue right-of-way, and further described as follows;

Strips of land 100 feet wide lying adjacent and parallel to all sides of County Ditch #36, as it runs through said NE1/4 of the SE1/4;

and shown as the "Easement Area" on the Exhibit "A" attached to and made a part of this Conservation Easement.

...and modified shapefile goes into master layer after easement is recorded and paid.

In-Depth on Boundary & Legal Considerations

- I strongly recommend attending the BWSR Academy session “*Boundary and Legal Considerations for Conservation Easements*”
- Wednesday (Tomorrow) Oct. 30 @ 8:30-10:00 AM
- Tim Fredbo (BWSR) and Tom Wenzel (BWSR)
 - tim.fredbo@state.mn.us | tom.wenzel@state.mn.us



Questions?

Questions, comments or to get a digital copy of this presentation...

Send me an e-mail:

seth.weeks@state.mn.us